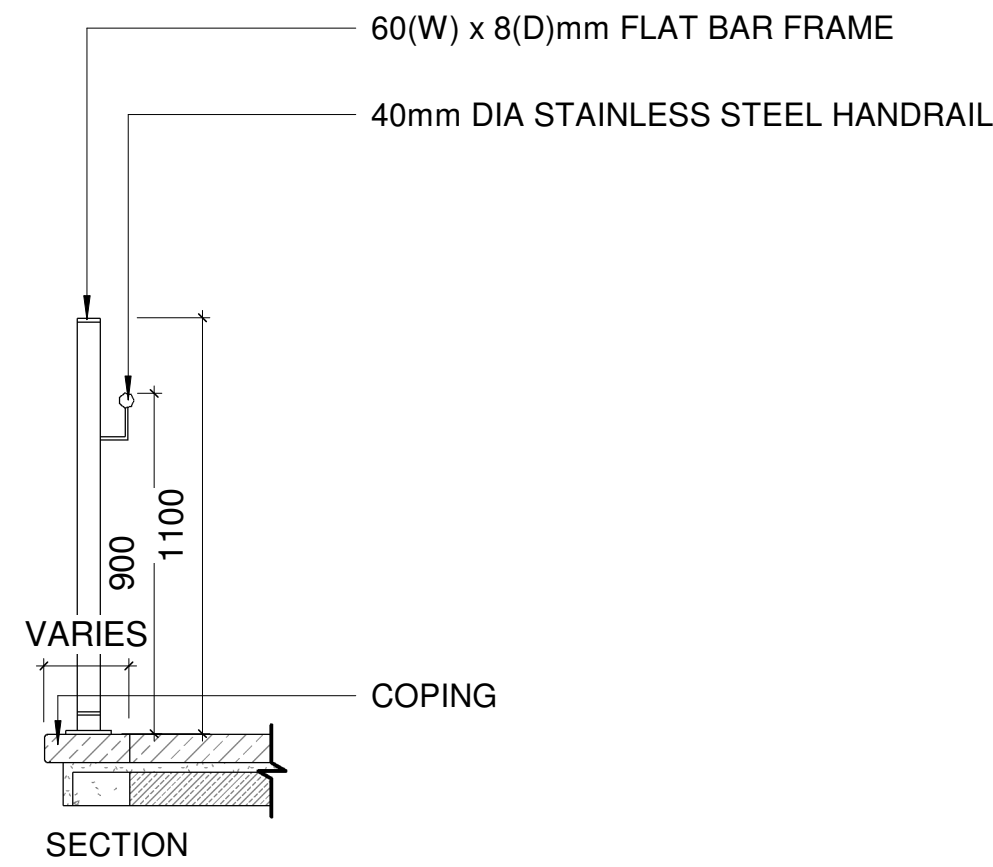
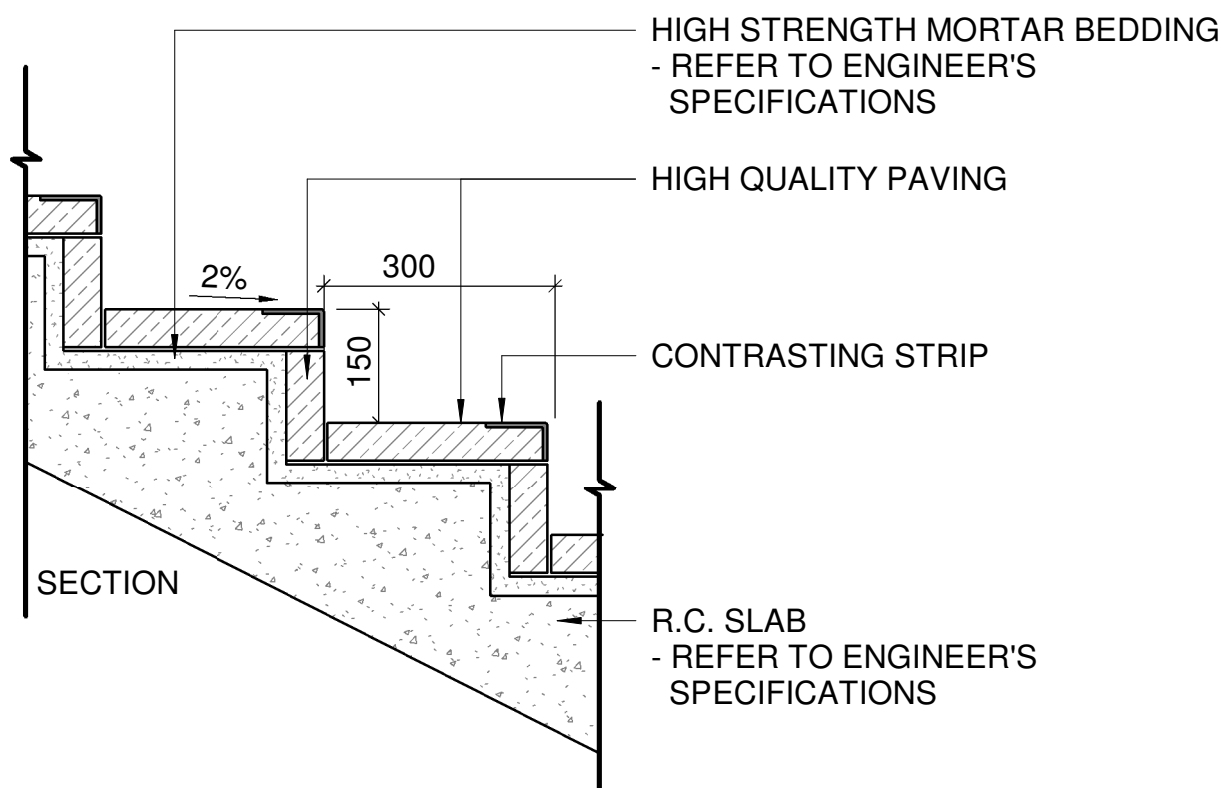
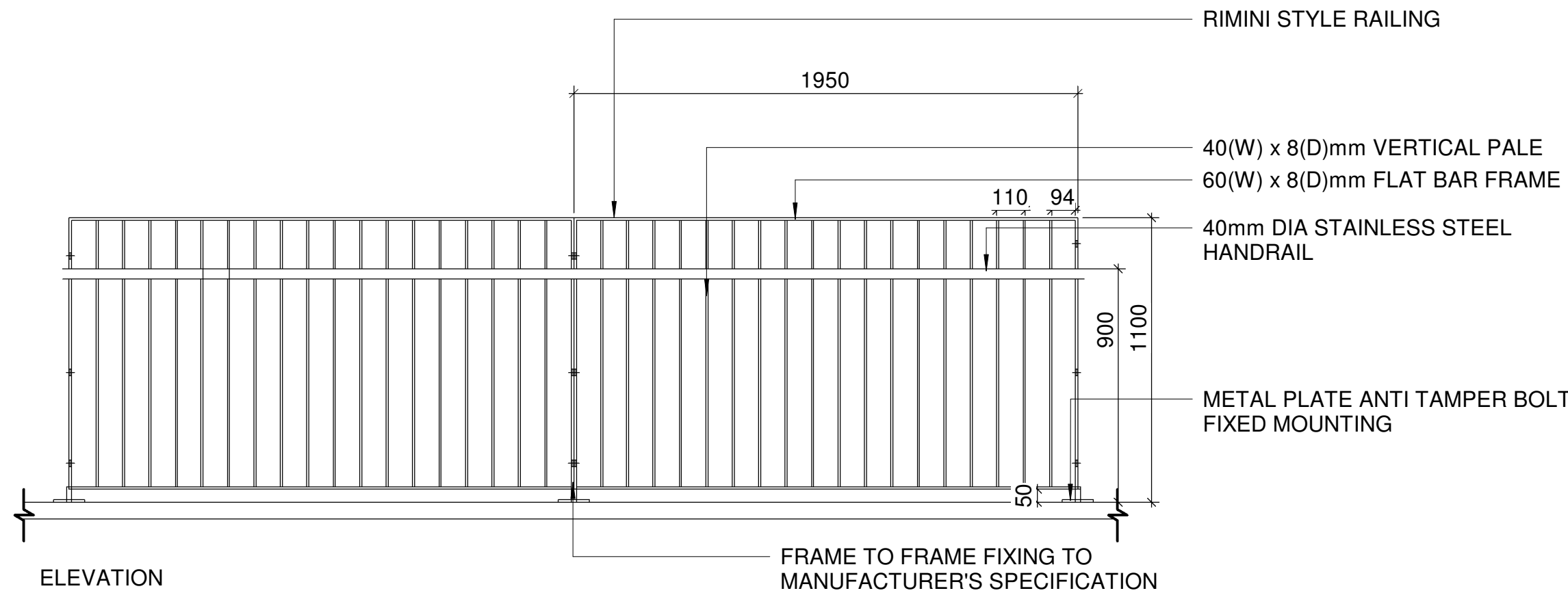
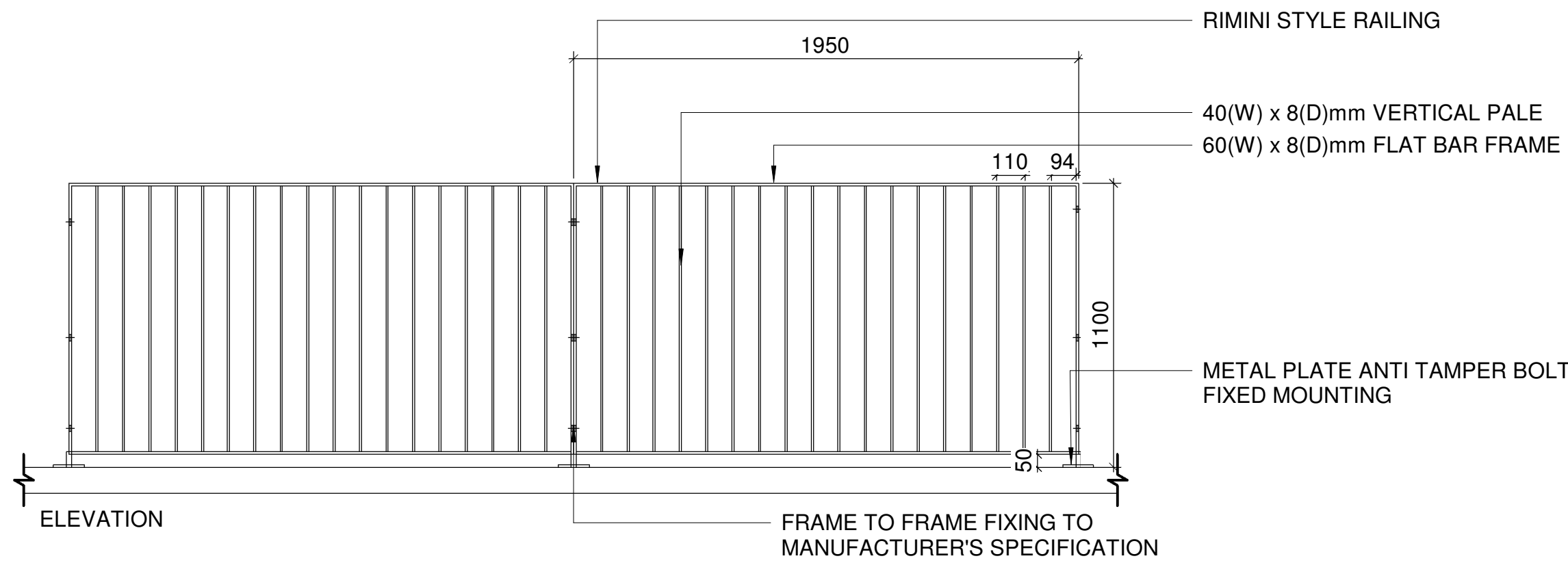


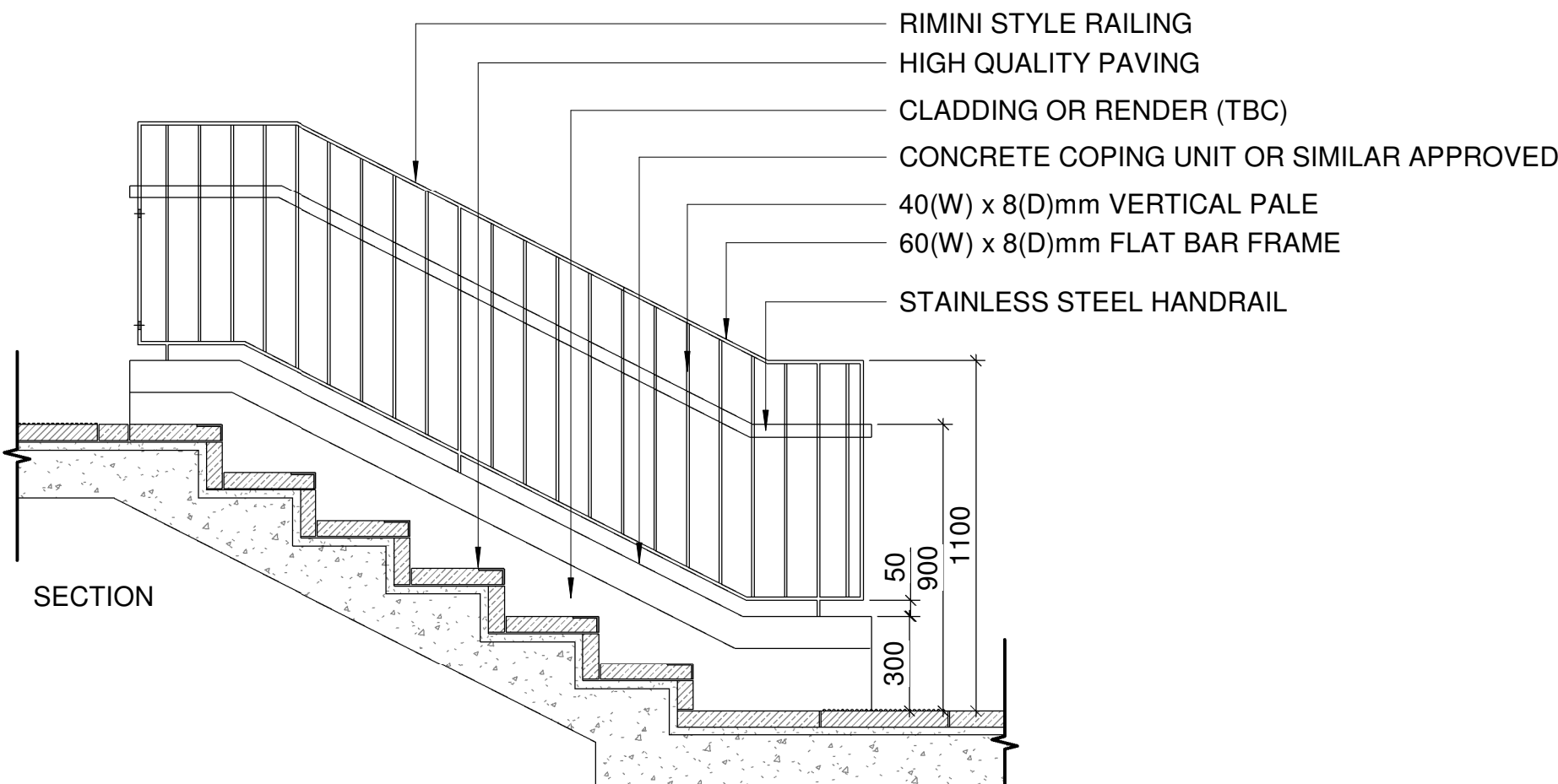
01 TYPICAL DETAIL: RIMINI STYLE RAILING WITHOUT HANDRAIL
SCALE: 1 : 20 @A1



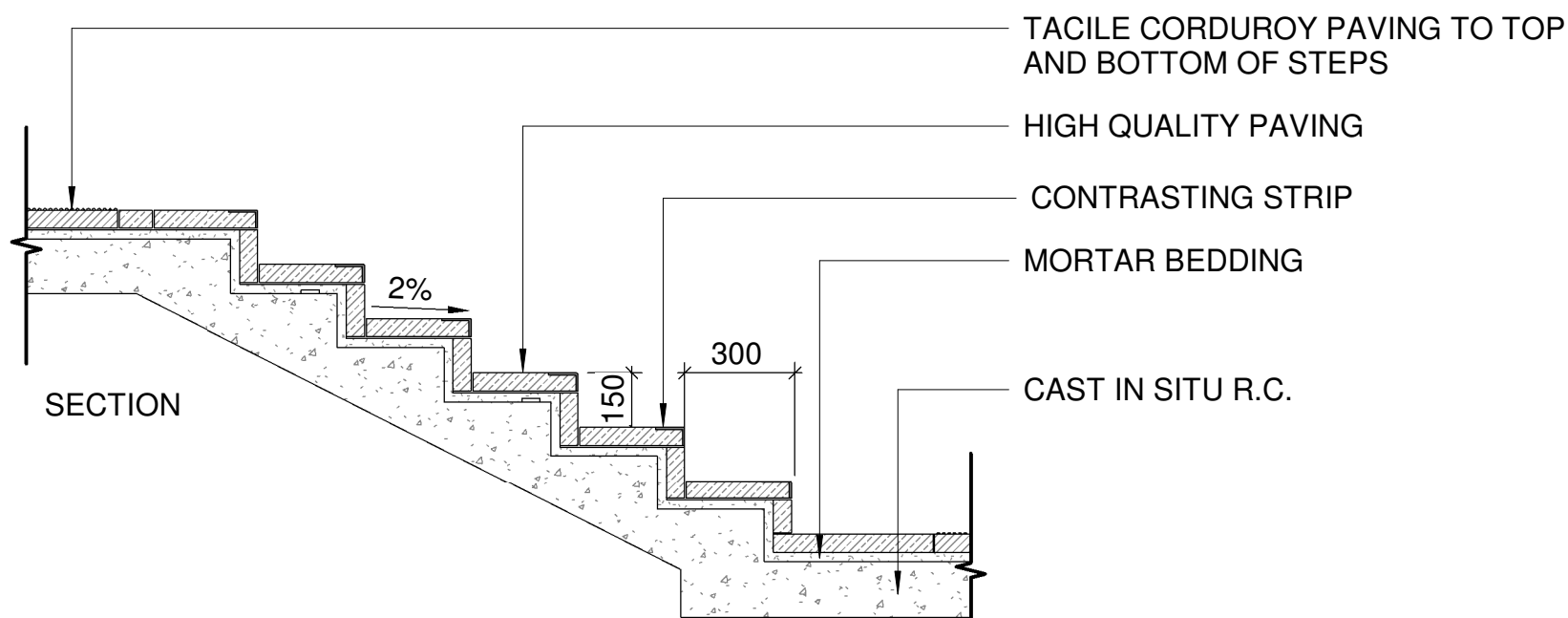
02 TYPICAL DETAIL: AREAS OF TURF
SCALE: 1 : 20 @A1



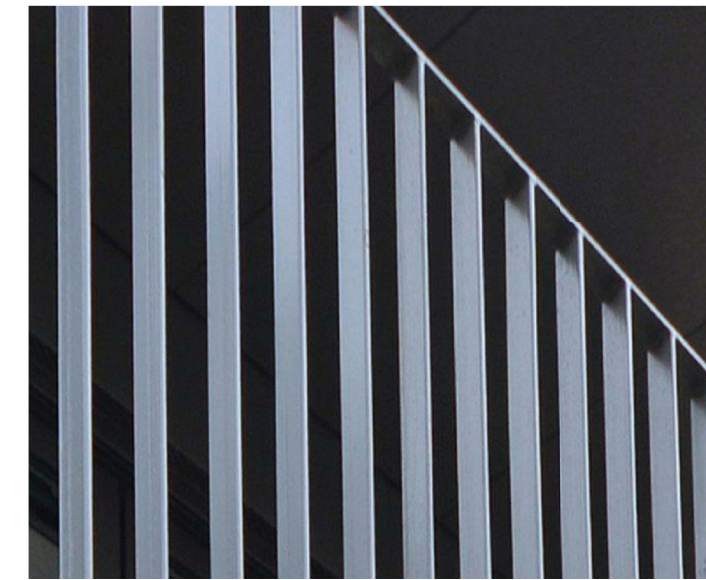
03 TYPICAL DETAIL: STEP GOING & -RISER
SCALE: 1 : 10 @A1



04 TYPICAL DETAIL: RIMINI STYLE RAILING TO LANDSCAPE STEPS
SCALE: 1 : 20 @A1



05 TYPICAL DETAIL: LANDSCAPE STEPS LONG SECTION
SCALE: 1 : 20 @A1



REFERENCE IMAGE



REFERENCE IMAGE

NOTE
ALL DIMENSIONS TO BE CHECKED ON SITE
NO DIMENSIONS TO BE SCALED FROM THIS DRAWING
THIS DRAWING IS TO BE READ IN CONJUNCTION WITH RELEVANT CONSULTANTS DRAWINGS
NO PART OF THIS DOCUMENT MAY BE RE-PRODUCED OR TRANSMITTED IN ANY FORM OR STORED IN ANY RETRIEVAL SYSTEM OF ANY NATURE WITHOUT THE WRITTEN PERMISSION OF THE LANDSCAPE ARCHITECT AS COPYRIGHT HOLDER EXCEPT AS AGREED FOR USE ON THE PROJECT FOR WHICH THE DOCUMENT WAS ORIGINALLY ISSUED
SHOP DRAWINGS TO BE SUBMITTED, WHERE REQUIRED AND REQUESTED, FOR APPROVAL

CLIENT:

ST. VINCENT'S HOSPITAL FAIRVIEW

ARCHITECTS:



REFERENCE: THIS DRAWING IS NOT FOR CONSTRUCTION

P01	FOR INFORMATION	2023/03/24
P00	FOR INFORMATION	2022/10/20

REVISIONS

Job No.	96Z1B	Drawn	LB	Checked	HL
Dwg No.	SVRD-NMP-33-00-M3-L-L1-903-1				
Scale	As indicated @A1	Date		MAR 2023	

JOB DESCRIPTION

Site	ST. VINCENT'S HOSPITAL, RICHMOND ROAD, DUBLIN 3
Project	ST. VINCENT'S HOSPITAL FAIRVIEW REDEVELOPMENT
Title	STEP + RAMP + RAILING DETAILS